



SURREY
POLICE SERVICE

Crime Stat Report

4th Quarter 2024

DATE: 2025-01-17

AUTHOR: Crime Analysis Section

Report Notes & Data Qualifiers

The crime and offence data contained within this report is drawn from the PRIME records management system which captures crime and occurrences that are either reported to or discovered by police. Not all crime and occurrences are reported or otherwise brought to the attention of police. Incidents reported to police may result in one or more offences or violations being counted. Through investigation police determine or substantiate which offences, if any, took place. All reported incidents are considered founded at the outset, but may be determined to be unsubstantiated upon investigation. The information in this report is considered preliminary incident data and may not represent statistics submitted to the Canadian Center for Justice Statistics. The data represents a 'snapshot' in time and is subject to change for a variety of reasons, including late reporting and reclassification due to changes in circumstance, the stage and/or outcome of an investigation, or corrective action taken for quality assurance purposes. Such changes can affect the number and nature of offences recorded in PRIME.

All data (2023/2024) queried from PRIME on 2025-01-14¹.

Report selection criteria included all 'founded' incidents (CCJS = B:Z) for all crimes and crime types (i.e., not just the most serious) occurring within the Surrey municipality and for which the primary investigative unit was Surrey Police Service or RCMP Provincial Operations Support Unit (Surrey GO = SP or 1301²). Crime type and category totals include incidents with an unknown district/location. Unfounded incidents are not included. Surrey Police Service (SP) files, but not Surrey Provincial Operations Support Unit (1301) files, marked *Private* are included. First Nation (Surrey Prov) data is included.

Violent Crime figures extracted from PRIME are under-counted; they do not account for violent crimes with more than one victim (person targeted). As per UCR II scoring rules, person (violent) crime offences are typically counted by the number of victims.

UCR Codes included in Offence Category groupings:

CC Offences	1000-3000 level series (total)
Violent Crime	1000 level series (total)
Attempted Murder	1200 level
Robbery	1610 level (1610-1, 1610-2, 1610-3)
Sexual Offences	1300 level
Assault	1400 level
Forcible Confinement/ Kidnapping/Abduction	1500 level
Property Crime	2000 level series (total)
Business B&E	2120-1
Residential B&E	2120-2
B&E (All)	2120 level
Auto Theft	2135 level
Theft from Auto	2132-0, 2142-0
Theft Over \$5000	2130-10, 2130-13, 2130-15
Theft Under \$5000	2140-10, 2140-13, 2140-14
Shoplifting	2133, 2143
Stolen Property	2150 level
Fraud (Total)	2160 level
Identity Theft/Fraud	2165, 2166
Arson	2110-0, 1629-0
Mischief (property)	2170 level
Other CC Offences	3000 level series (total)
Offensive Weapons	3300 level
Cause a Disturbance	3430-0
Breach/Bail Violations	3410-0
CDSA	4000 level series (total)
Possession	4100 level
Trafficking	4200 level
Production	4300-4400 level

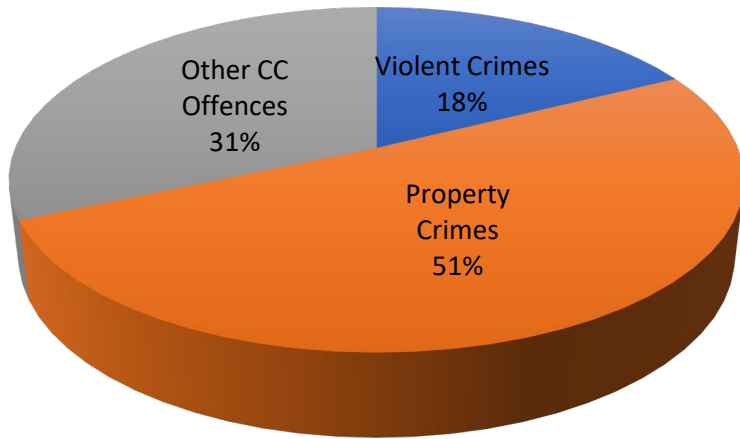
¹ Homicide data, provided by IHIT based on their investigational files, has been included for reference only. Surrey homicide figures are not included in the Violent Crime or Criminal Code totals.

² Due to the change in Police of Jurisdiction from Surrey RCMP to Surrey Police Service, some police files were transferred (from 1301 to SP) and resulted in duplicated police reports in the data set.

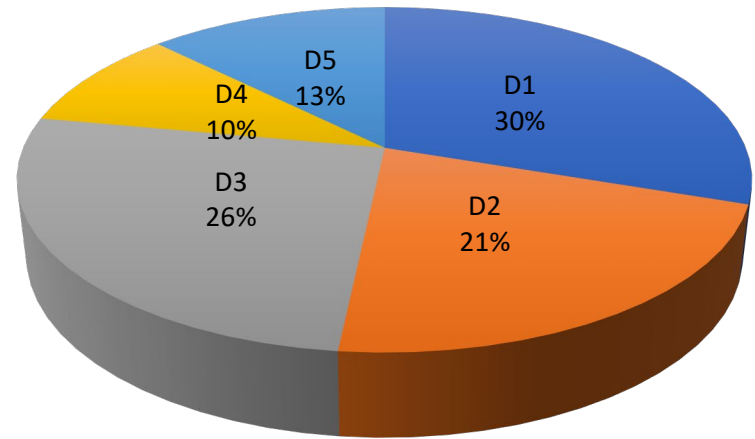
Q4	Recorded Offences Q4 2024						Recorded Offences Q4 2023						% Change Q4 2023 to Q4 2024					
	D1	D2	D3	D4	D5	TOTAL	D1	D2	D3	D4	D5	TOTAL	D1	D2	D3	D4	D5	TOTAL
Homicide	1	0	0	0	0	1	0	0	0	0	0	0	N/C	N/C	N/C	N/C	N/C	N/C
Violent Crimes	431	299	461	146	123	1468	419	294	437	150	114	1425	3%	2%	5%	-3%	8%	3%
Attempted Murder	0	0	0	0	0	0	1	0	0	0	0	1	-100%	N/C	N/C	N/C	N/C	-100%
Robbery	39	22	11	3	2	79	26	18	19	5	6	74	50%	22%	-42%	-40%	-67%	7%
Sexual Offences	27	25	35	16	15	122	24	17	25	13	8	90	13%	47%	40%	23%	88%	36%
Assault	232	125	219	62	59	698	234	152	210	67	51	714	-1%	-18%	4%	-7%	16%	-2%
Abduction/Kidnapping	3	0	1	2	0	6	0	1	3	1	0	5	N/C	-100%	-67%	100%	N/C	20%
Property Crimes	1234	1177	1138	464	699	4738	1163	1162	1275	496	672	4817	6%	1%	-11%	-6%	4%	-2%
Business B&E	19	22	22	19	19	101	27	18	25	32	35	137	-30%	22%	-12%	-41%	-46%	-26%
Residential B&E	15	25	22	17	47	126	16	45	18	10	25	114	-6%	-44%	22%	70%	88%	11%
Total B&E (All)	53	58	59	45	84	299	64	81	62	56	71	334	-17%	-28%	-5%	-20%	18%	-10%
Theft Motor Vehicle	58	76	54	41	44	273	70	64	60	45	29	268	-17%	19%	-10%	-9%	52%	2%
Theft From Vehicle	161	194	153	88	130	735	173	222	203	91	111	814	-7%	-13%	-25%	-3%	17%	-10%
Theft Over 5000	7	7	7	10	12	43	10	6	1	6	4	27	-30%	17%	600%	67%	200%	59%
Theft Under 5000	293	208	179	69	114	870	272	197	201	79	115	869	8%	6%	-11%	-13%	-1%	0%
Shoplifting	215	265	269	29	96	875	167	234	280	25	115	821	29%	13%	-4%	16%	-17%	7%
Stolen Property	12	6	3	6	4	32	5	9	4	7	2	28	140%	-33%	-25%	-14%	100%	14%
Fraud (Total)	203	180	237	94	132	853	198	195	264	99	119	903	3%	-8%	-10%	-5%	11%	-6%
Identity Theft/Fraud	11	2	17	2	3	35	13	16	13	4	7	58	-15%	-88%	31%	-50%	-57%	-40%
Arson	12	4	11	4	3	34	15	5	12	6	4	42	-20%	-20%	-8%	-33%	-25%	-19%
Mischief	205	170	158	78	77	689	177	148	183	80	94	683	16%	15%	-14%	-3%	-18%	1%
Other CC Offences	666	423	481	147	188	1919	937	432	462	149	170	2176	-29%	-2%	4%	-1%	11%	-12%
Offensive Weapons	25	15	6	5	1	53	28	19	18	8	2	75	-11%	-21%	-67%	-38%	-50%	-29%
Cause a Disturbance	808	350	359	111	136	1765	550	347	338	124	159	1518	47%	1%	6%	-10%	-14%	16%
Breach/Bail Violations	62	37	48	12	11	172	54	32	47	10	14	157	15%	16%	2%	20%	-21%	10%
TOTAL CC	2331	1899	2080	757	1010	8125	2519	1888	2174	795	956	8418	-7%	1%	-4%	-5%	6%	-3%
Possession	14	4	2	6	3	29	28	10	6	11	2	57	-50%	-60%	-67%	-45%	50%	-49%
Trafficking	16	2	6	8	0	32	7	11	2	4	2	26	129%	-82%	200%	100%	-100%	23%
Production	0	0	0	0	0	0	0	0	1	0	0	1	N/C	N/C	-100%	N/C	N/C	-100%
TOTAL CDSA	31	8	11	15	3	68	36	22	11	16	4	89	-14%	-64%	0%	-6%	-25%	-24%

YTD	Recorded Offences Q1 to Q4 2024						Recorded Offences Q1 to Q4 2023						% Change Q1 to Q4 from 2023 to 2024					
	D1	D2	D3	D4	D5	TOTAL	D1	D2	D3	D4	D5	TOTAL	D1	D2	D3	D4	D5	TOTAL
Homicide	3	0	3	1	1	8	5	4	1	1	1	12	-40%	-100%	200%	0%	0%	-33%
Violent Crimes	1761	1124	1743	626	537	5831	1888	1204	1769	595	491	6002	-7%	-7%	-1%	5%	9%	-3%
Attempted Murder	0	0	2	0	1	3	1	1	3	0	0	5	-100%	-100%	-33%	N/C	N/C	-40%
Robbery	136	76	66	18	24	324	135	75	67	22	23	323	1%	1%	-1%	-18%	4%	0%
Sexual Offences	118	101	116	57	62	472	117	101	100	40	32	404	1%	0%	16%	43%	94%	17%
Assault	950	534	854	272	244	2856	1056	595	916	264	214	3049	-10%	-10%	-7%	3%	14%	-6%
Abduction/Kidnapping	12	4	10	3	1	32	9	8	8	3	3	31	33%	-50%	25%	0%	-67%	3%
Property Crimes	5076	4413	4996	1901	2846	19426	4917	4600	5034	2018	2845	19664	3%	-4%	-1%	-6%	0%	-1%
Business B&E	93	91	88	85	87	444	123	100	89	79	121	512	-24%	-9%	-1%	8%	-28%	-13%
Residential B&E	80	103	80	71	170	504	106	114	84	58	144	506	-25%	-10%	-5%	22%	18%	0%
Total B&E (All)	246	242	213	178	303	1182	295	264	218	164	308	1249	-17%	-8%	-2%	9%	-2%	-5%
Theft Motor Vehicle	231	237	212	145	124	949	270	239	260	162	130	1064	-14%	-1%	-18%	-10%	-5%	-11%
Theft From Vehicle	701	806	676	366	490	3102	825	903	990	491	583	3862	-15%	-11%	-32%	-25%	-16%	-20%
Theft Over 5000	25	27	24	24	33	133	31	26	16	15	22	110	-19%	4%	50%	60%	50%	21%
Theft Under 5000	1169	776	801	294	452	3526	1084	794	763	293	466	3431	8%	-2%	5%	0%	-3%	3%
Shoplifting	934	961	1244	134	520	3794	693	994	936	116	433	3173	35%	-3%	33%	16%	20%	20%
Stolen Property	48	26	16	17	17	125	33	22	30	17	17	120	45%	18%	-47%	0%	0%	4%
Fraud (Total)	800	720	989	371	507	3474	780	730	953	365	430	3385	3%	-1%	4%	2%	18%	3%
Identity Theft/Fraud	33	25	48	22	20	153	44	63	52	23	23	215	-25%	-60%	-8%	-4%	-13%	-29%
Arson	40	21	44	22	12	139	69	24	47	18	21	179	-42%	-13%	-6%	22%	-43%	-22%
Mischief	845	578	757	348	366	2902	809	588	797	367	414	2991	4%	-2%	-5%	-5%	-12%	-3%
Other CC Offences	3159	1585	1949	624	780	8237	4483	2205	2549	767	1102	11188	-30%	-28%	-24%	-19%	-29%	-26%
Offensive Weapons	99	70	57	24	15	266	116	77	76	37	12	318	-15%	-9%	-25%	-35%	25%	-16%
Cause a Disturbance	2623	1211	1455	481	634	6404	3911	1799	2068	560	927	9267	-33%	-33%	-30%	-14%	-32%	-31%
Breach/Bail Violations	231	161	202	62	69	727	235	157	194	71	65	725	-2%	3%	4%	-13%	6%	0%
TOTAL CC	9996	7122	8688	3151	4163	33494	11288	8009	9352	3380	4438	36854	-11%	-11%	-7%	-7%	-6%	-9%
Possession	48	27	19	21	11	126	104	39	31	36	15	227	-54%	-31%	-39%	-42%	-27%	-44%
Trafficking	44	19	26	19	5	113	59	36	29	19	9	153	-25%	-47%	-10%	0%	-44%	-26%
Production	1	0	2	0	0	3	0	0	1	0	0	1	N/C	N/C	100%	N/C	N/C	200%
TOTAL CDSA	99	49	54	43	19	264	166	78	70	58	25	400	-40%	-37%	-23%	-26%	-24%	-34%

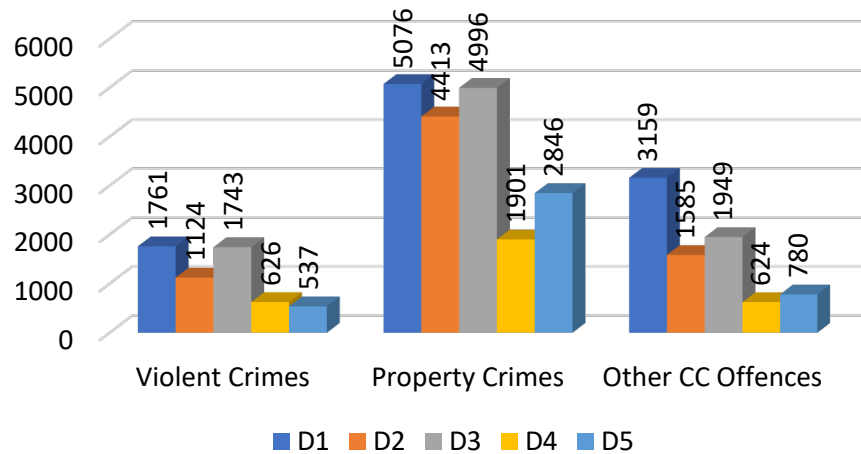
Total YTD CC Offences



Total YTD CC Incidents Across Districts



YTD Crime Categories Across Districts



YTD CC Incidents Within Districts

